

nazembaghery@yahoo.com

)

(

(!

)

:

...

(*classification*)

(*signal processing*)

:

(*approximation*)

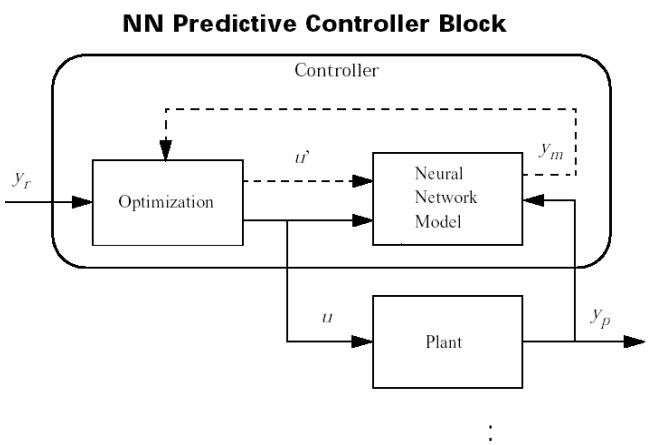
(universal function approximation)

. [] []

...

:(

).

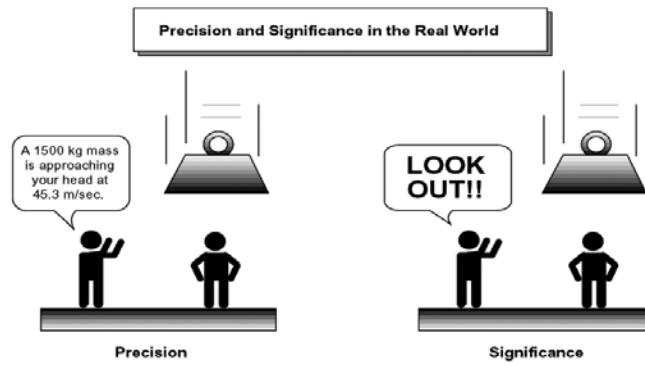


[].

... ..

[]

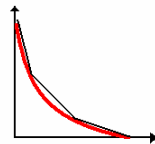
:



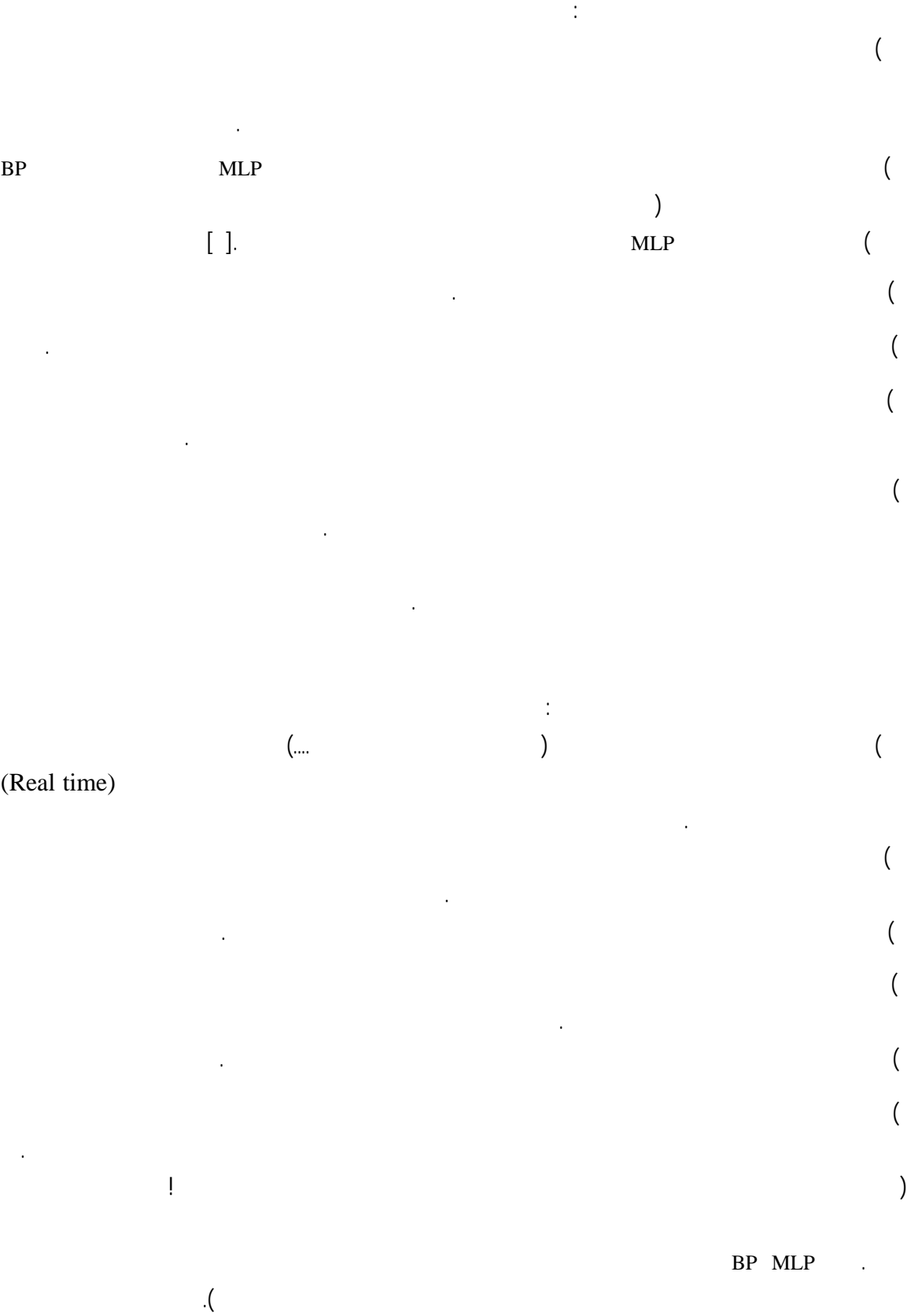
:

. []

IF....THEN.....



:



()

(

(.....)

(

(

(

(

(

(

()

(

(

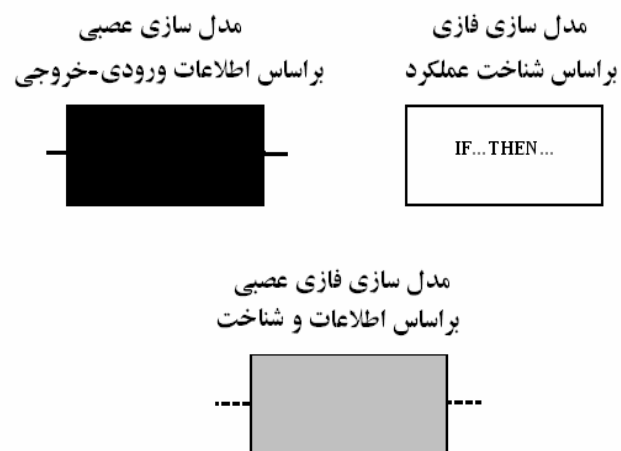
(

(

!

(

[] .



:

:

2. G. Cybenko, " Approximation by Superposition of a Sigmoidal Function"Mathematics of Control,Signals and System, Vol.2,1989
3. V.Kecman, Learning and Soft Computing,Massachusetts Institute of Technology , p11, 2001.
4. MATLAB pdf help file, v6.5